

b-1 bs d white green 2.8 n2 no. 1000



b-2 bs d white green 2.8 n2 no. 1000



b-3 bs d white green 2.8 n4 no. 1200



b-4 bs d white green 2.8 n4 no. 1200



b-5 bs d white 2.8 n2 no. 1700



b-6 bs d white 2.8 n2 no. 1100



b-7 bs d white 2.8 n2 no. 1100



b-8 bs d white 2.8 n4 no. 1400



b-9 bs d white 2.8 n4 no. 1400



b-10 bs d white 2.8 n4 no. 1000



b-11 bs d blue 2.8 n4 no. 1300



b-12 bs d blue square 2.8 n2 no. 1100



b-13 bs d white pink 2.8 n4 no. 1000



b-14 bs d white 2.8 n4 no. 1700



b-15 bs d white 2.8 n4 no. 1700



b-16 bs d white 2.8 n2 no. 1100



b-17 bs d white pink 2.8 n2 no. 1200



b-18 bs d white pink 2.8 n2 no. 1200



b-19 bs d white pink square 2.8 n2 no.
1100



b-20 bs d white green 2.8 n4 no. 1300



b-21 bs d rg white 2.8 n2 no. 1200



b-22 bs d rg white 2.8 n4 no. 1100



b-23 bs d rg white 2.8 n4 no. 1100



b-24 bs d rg white 2.8 n2 no. 1100



b-25 bb ga 2.8 n4 no. 2800



b-26 bb ga 2.8 n2 no. 1400



b-27 bb ga coin 2.8 n2 no. 2300



b-28 bb ga coin 2.8 n2 no. 2300



b-29 bb ga red stone 2.8 n4 no. 2900



b-30 bb ga 2.8 n2 no. 1400



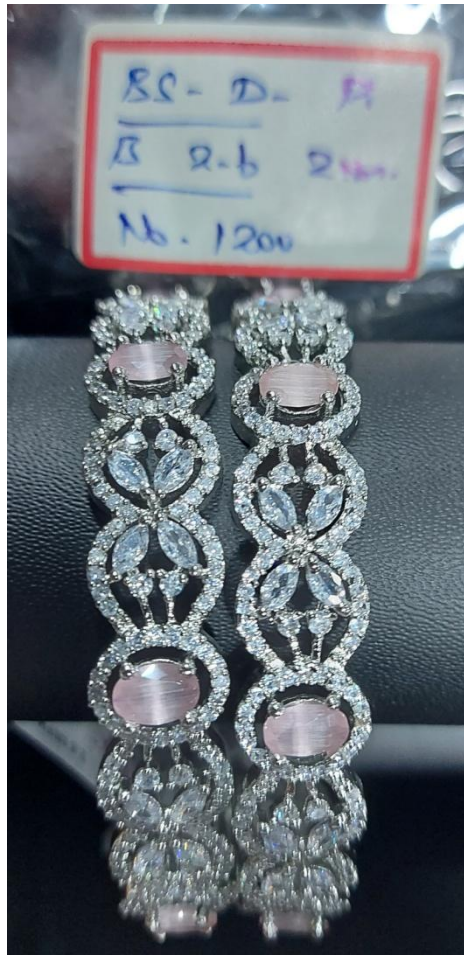
b-31 bb ga 2.8 n2 no. 1400



b-32 bb ga 2.8 n2 no. 1400



b-33 bs d white pink 2.6 n2 no. 1200



b-34 bs d white pink 2.6 n2 no. 1200



b-35 bs d white pink 2.6 n4 no. 1000



b-36 bs d white 2.6 n2 no. 1000



b-37 bs d white 2.6 n2 no. 1000



b-38 bs d white 2.6 n2 no. 900



b-39 bs d white 2.6 n2 no. 900



b-40 bs d rg white 2.6 n4 no. 1100



b-41 bs d rg white 2.6 n4 no. 1100



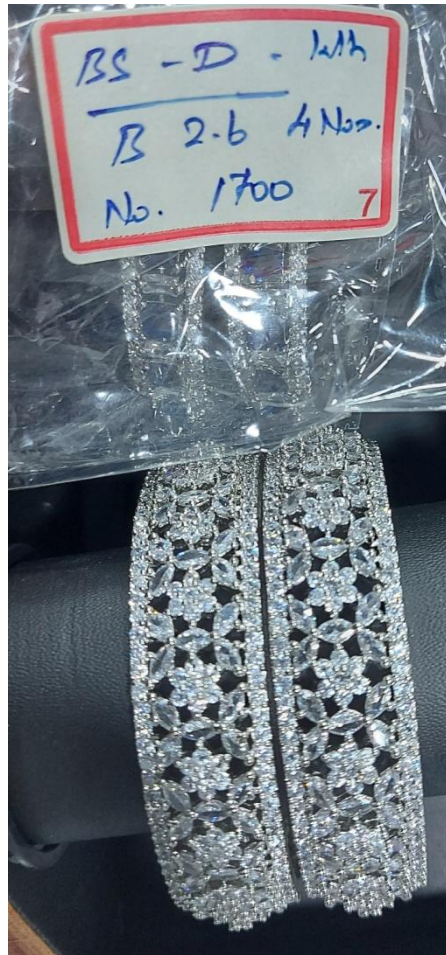
b-42 bs d rg white 2.6 n2 no. 1100



b-43 bs d rg white pink 2.6 n2 no. 1300



b-44 bs d white 2.6 n2 no. 1700



b-45 bs d white blue square 2.6 n2 no.
1100



b-46 bs d white blue 2.6 n4 no. 1300



b-47 bs d pink white 2.6 n4 no. 1000



b-48 bs d white green square 2.6 n2
no. 1000



b-49 bs d white 2.6 n2 no. 1100



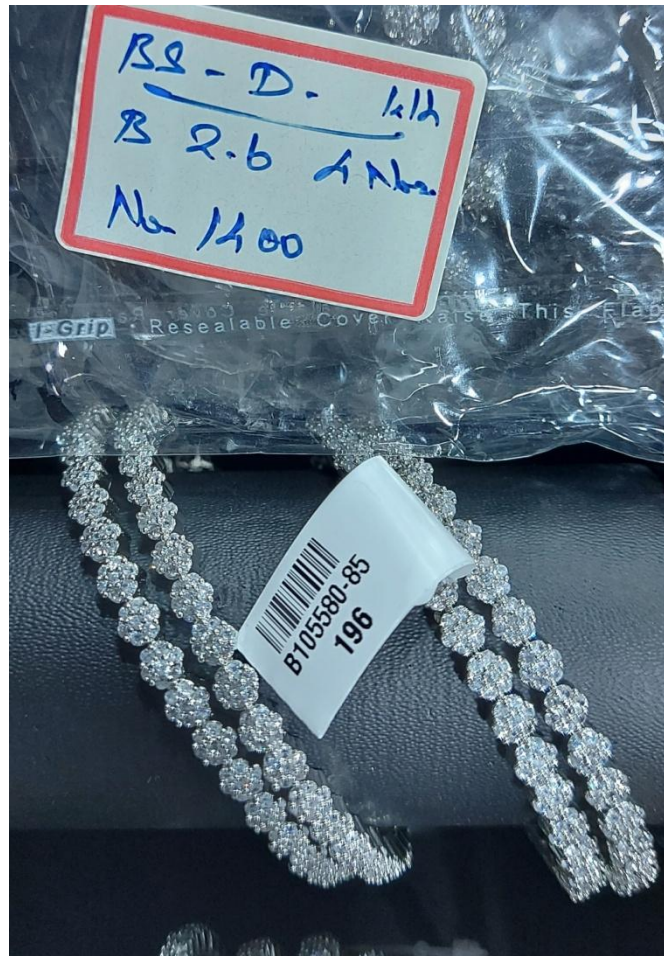
b-50 bs d white 2.6 n2 no. 1100



b-51 bs d white 2.6 n4 no. 1400



b-52 bs d white 2.6 n4 no. 1400



b-53 bs d white green 2.6 n4 no. 1000



b-54 bs d green 2.6 n4 no. 1300



b-55 bs d green 2.6 n4 no. 1300



b-56 bs d white green 2.6 n4 no. 1300



b-57 bs d white 2.6 n4 no. 1700



b-58 bs d white 2.6 n4 no. 1700



b-59 bs d white 2.6 n4 no. 1300



b-60 bs d white green 2.6 n4 no. 1200



b-61 bs d white green square 2.6 n2
no. 1100



b-62 bs d white green 2.6 n4 no. 1200



b-63 bs d white green square 2.6 n2
no. 1100



b-64 bs d white pink square 2.6 n2 no.
1100



b-65 bb ga stones 2.6 n2 no. 1600



b-66 bb ga stones 2.6 n4 no. 1400



b-67 bb ga 2.6 n4 no. 900



b-68 bb ga stones 2.6 n4 no. 1400



b-69 bb ga stones 2.6 n4 no. 2000



b-70 bb ga 2.6 n4 no. 900



b-71 bb ga red square stone 2.6 n2 no.
1400



b-72 bb ga red square stone 2.6 n2 no.
1400



b-73 bb ga laxmi 2.6 n4 no. 2800



b-74 bb ga laxmi 2.8 n2 no. 2000



b-75 bb ga annam stone 2.6 n2 no.
2500



b-76 bb ga stones 2.6 n4 no. 3400

